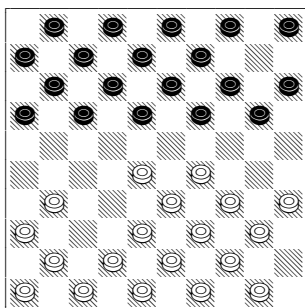


**(1) Chizhov,A. (Alexey) - Schwarzman,A. (Alexander)**

SWMG Men blitz, 12-12-2012

1.34-29 19-23 2.40-34 14-19 3.45-40 10-14 4.32-28 23x32 5.37x28



5-10 6.50-45 16-21 7.31-26 11-16 8.42-37 7-11 9.48-42 1-7 10.37-32 19-23  
11.28x19 14x23 12.41-37 10-14 13.35-30 21-27 14.32x21 16x27 15.46-41 20-  
25 16.40-35 17-21 17.26x17 12x21 18.33-28 23x32 19.37x28 11-16 20.38-32  
27x38 21.42x33 7-12 22.41-37 6-11 23.36-31 21-26 24.37-32 26x37 25.32x41  
11-17 26.30-24 18-22 27.41-37 22-27 28.43-38 14-20 29.38-32 27x38  
30.33x42 13-18 31.44-40 9-13 32.37-31 4-9 33.31-26 9-14 34.42-37 18-22  
35.49-44 22x33 36.29x38 20x29 37.34x23 17-22 38.39-34 13-19 39.38-32  
19x28 40.32x23 22-27 41.23-19 14x23 42.34-30 25x34 43.40x7 2x11 44.35-30  
11-17 45.44-39 17-22 46.39-33 8-13 47.30-24 3-9 48.45-40 13-18 49.24-19  
9-14 50.19x10 15x4 51.40-34 18-23 52.26-21 27-31 53.37x26 16x27 54.33-29  
4-9 55.29x18 22x13 56.47-42 13-18 57.42-38 18-22 58.38-33 27-32 59.26-21  
32-37 60.21-16 37-42 61.16-11 42-47 62.33-28 22x33 63.11-7 9-13 64.34-29  
1-1

**(2) Tolchykau,A. (Andrei) - Mikhalchenka,I. (Ihar)**

WRUS-ch, 19-04-2009

1.34-29 19-23 2.40-34 14-19 3.45-40 10-14 4.32-28 23x32 5.37x28 17-22 6.28x17  
12x21 7.33-28 7-12 8.41-37 5-10 9.37-32 1-7 10.46-41 21-26 11.41-37 11-17 12.38-  
33 17-22 13.28x17 12x21 14.33-28 18-22 15.28x17 21x12 16.43-38 13-18 17.39-33 9-  
13 18.44-39 4-9 19.29-24 20x29 20.33x24 19x30 21.34x25 13-19 22.35-30 8-13  
23.30-24 19x30 24.25x34 2-8 25.38-33 14-19 26.42-38 10-14 27.47-42 19-23 28.49-  
43 14-19 29.40-35 15-20 30.34-29 23x34 31.39x30 19-24 32.30x19 13x24 33.43-39 8-  
13 34.32-28 20-25 35.37-32 26x37 36.42x31 3-8 37.31-27 6-11 38.39-34 11-17  
39.34-29 17-22 40.29x20 25x14 41.28x17 12x21 42.50-44 18-22 43.27x18 13x22  
44.48-42 21-27 45.32x21 16x27 46.33-28 22x33 47.38x29 8-13 48.44-39 7-12 49.39-  
33 27-32 50.42-37 32x41 51.36x47 13-18 52.35-30 18-22 53.30-24 22-27 54.29-23 9-  
13 55.23-19 14x23 56.24-20 27-32 57.20-15 23-28 1-1

**(3) NDiaye,M. (Macodou) - Wijker,S. (Steven)**

Heerhugowaard, 15-07-2013

1.34-29 19-23 2.40-34 14-19 3.45-40 10-14 4.32-28 23x32 5.37x28 5-10 6.50-45 17-  
22 7.28x17 12x21 8.41-37 7-12 9.37-32 21-26 10.32-28 26x37 11.42x31 1-7 12.29-24  
20x29 13.34x23 18x29 14.33x24 19x30 15.35x24 13-18 16.46-41 16-21 17.41-37 21-26  
18.47-42 18-23 19.28x19 14x23 20.40-34 12-18 21.45-40 7-12 22.40-35 9-14 23.34-  
30 11-17 24.24-19 15-20 25.19x28 20-24 26.30x19 14x41 27.36x47 26x37 28.42x31  
17-22 29.48-42 10-14 30.38-32 8-13 31.43-38 13-19 32.38-33 3-8 33.42-38 19-23  
34.32-27 8-13 35.38-32 23-29 36.33x24 22-28 37.32x23 18x20 38.39-33 20-24 39.44-  
39 14-19 40.47-42 19-23 1-1

**(4) NDiaye,M. (Macodou) - Jansen,G.M.H.S. (Gjrrard)**

NLD-chT Ereklasse, 28-09-2013

1.34-29 19-23 2.40-34 14-19 3.45-40 10-14 4.32-28 23x32 5.37x28 17-22 6.28x17  
12x21 7.41-37 7-12 8.37-32 21-26 9.33-28 26x37 10.42x31 20-24 11.29x20 15x24

12.39-33 5-10 13.46-41 18-23 14.44-39 10-15 15.41-37 12-18 16.31-27 1-7 17.47-42  
7-12 18.50-45 11-17 19.37-31 17-21 20.34-29 23x34 21.40x20 15x24 22.45-40 18-23  
23.40-34 13-18 24.27-22 18x27 25.31x22 12-18 26.22x13 9x18 27.36-31 8-13 28.34-  
29 23x34 29.39x30 18-23 30.31-27 21-26 31.28-22 2-7 32.22-17 7-12 33.17x8 13x2  
34.27-22 2-7 35.32-28 23x32 36.38x27 7-12 37.43-38 6-11 38.49-43 3-9 39.42-37  
11-17 40.22x11 16x7 41.37-32 9-13 42.32-28 13-18 43.28-22 18-23 1-1

**(5) Ivanov,A. (Artem) - Ndjofang,J. (Jean-Marc)**

World Cup Rapid Barrage, 22-09-2013

1.34-29 19-23 2.40-34 14-19 3.45-40 10-14 4.32-28 23x32 5.37x28 17-22 6.28x17  
12x21 7.33-28 7-12 8.39-33 1-7 9.42-37 21-26 10.47-42 11-17 11.44-39 5-10 12.49-  
44 7-11 13.29-24 20x29 14.33x24 19x30 15.35x24 14-19 16.34-30 10-14 17.39-33 14-  
20 18.40-35 20x29 19.33x24 17-22 20.28x17 12x21 21.31-27 21x32 22.38x27 18-22  
23.27x18 13x22 24.24x13 9x18 25.43-38 16-21 26.37-31 26x37 27.41x32 18-23 28.48-  
43 22-27 29.44-39 11-16 30.42-37 6-11 31.37-31 8-12 32.31x22 12-17 33.32-27  
21x32 34.38x27 17x28 35.46-41 15-20 36.41-37 2-8 37.30-25 20-24 38.43-38 8-12  
39.50-45 3-9 40.45-40 9-14 41.40-34 4-9 42.37-31 12-17 43.38-33 17-21 44.33x22  
21x32 45.39-33 9-13 46.33-28 13-19 47.28x37 11-17 48.22x11 16x7 49.31-27 23-29  
50.34x23 19x28 51.27-22 28x17 52.37-32 1-1

**(6) Golubeva,Z. (Zoja) - Motrichko,V. (Viktoriya)**

WchW, 11-10-2013

1.34-29 19-23 2.40-34 14-19 3.45-40 10-14 4.32-28 23x32 5.37x28 18-23 6.29x18  
12x32 7.38x27 7-12 8.41-37 5-10 9.46-41 1-7 10.42-38 12-18 11.37-32 7-12 12.41-  
37 19-23 13.47-42 17-21 14.50-45 14-19 15.33-28 20-24 16.34-30 10-14 17.39-33  
14-20 18.44-39 9-14 19.30-25 4-9 20.40-34 24-30 21.35x24 20x40 22.45x34 14-20  
23.25x14 9x20 24.33-29 20-24 25.29x20 15x24 26.49-44 21-26 27.44-40 11-17 28.27-  
22 18x27 29.31x11 16x7 30.36-31 12-18 31.31-27 8-12 32.37-31 26x37 33.42x31 7-11  
34.31-26 11-17 35.40-35 6-11 36.34-30 11-16 37.39-34 2-8 38.27-21 16x27 39.32x21  
23x32 40.38x27 3-9 41.48-42 9-14 42.43-39 17-22 43.21-16 22x31 44.26x37 12-17  
45.37-31 8-12 46.31-27 24-29 47.34x23 19x28 48.30-24 18-23 49.27-22 17-21  
50.16x27 28x17 51.35-30 12-18 52.42-37 17-22 53.37-31 23-28 54.30-25 28-32  
55.27x38 22-27 56.31x22 18x27 57.39-33 27-31 58.24-20 14-19 59.20-15 31-37  
60.15-10 37-41 61.10-4 41-47 62.4x18 47-36 63.18-40 36-13 64.38-32 19-24 65.33-  
28 13-2 66.32-27 24-30 67.25x34 2-16 68.40-45 2-0

**(7) Georgiev,A. (Alexander) - Heerema,G. (Gabriël)**

Wr sim time Alexander Ge, 17-11-2012

1.34-29 19-23 2.40-34 14-19 3.45-40 10-14 4.32-28 23x32 5.37x28 5-10 6.50-45 17-  
22 7.28x17 11x22 8.38-32 6-11 9.41-37 12-17 10.43-38 8-12 11.46-41 1-6 12.48-43  
22-27 13.31x22 18x27 14.32x21 17x26 15.34-30 12-18 16.30-25 20-24 17.29x20 15x24  
18.40-34 7-12 19.44-40 12-17 20.34-29 10-15 21.29x20 15x24 22.40-34 18-23 23.34-  
29 23x34 24.39x30 13-18 25.45-40 4-10 26.40-34 18-23 27.33-29 24x33 28.38x18 19-  
24 29.30x19 14x12 30.37-32 2-8 31.43-38 12-18 32.41-37 8-13 33.38-33 17-21  
34.34-29 9-14 35.42-38 21-27 36.32x21 16x27 37.35-30 14-19 38.30-24 19x30  
39.25x34 3-9 40.37-32 13-19 41.32x21 26x17 1-1 (1.28/1.32)

**(8) Boomstra,R.P. (Roel) - Georgiev,A. (Alexander)**

Match Boomstra - Georgie, 10-03-2013

1.34-29 19-23 2.40-34 14-19 3.45-40 10-14 4.32-28 23x32 5.37x28 5-10 6.50-45 19-  
23 7.28x19 14x23 8.35-30 20-25 9.30-24 23-28 10.33x22 17x28 11.41-37 12-17  
12.31-26 28-33 13.39x28 15-20 14.24x15 17-21 15.26x17 11x24 16.40-35 13-19  
17.44-40 8-13 18.43-39 7-12 19.38-33 10-14 20.48-43 6-11 21.42-38 11-17 22.37-32  
18-22 23.36-31 1-7 24.49-44 24-30 25.35x24 19x30 26.46-41 17-21 27.32-28 12-17  
28.31-26 30-35 29.34-29 13-19 30.40-34 7-12 31.44-40 35x44 32.39x50 12-18 33.50-  
44 9-13 34.44-39 3-9 35.38-32 22-27 36.43-38 18-23 37.29x18 13x22 38.34-29 25-30  
39.29-24 30-35 40.24x13 9x18 41.28-23 18x29 42.33x24 2-8 43.41-36 8-13 44.47-42  
14-19 45.24-20 13-18 46.39-33 18-23 47.42-37 23-29 48.33x13 22-28 49.32x23 27-31  
50.36x27 21x41 51.13-8 41-47 52.38-32 47-41 53.32-28 35-40 54.45x34 1-1

**(9) Boomstra,R.P. (Roel) - Amrillaew,M. (Mourodoull**

Wch, 19-05-2011

1.34-29 19-23 2.40-34 14-19 3.45-40 10-14 4.32-28 23x32 5.37x28 5-10 6.42-37 17-22 7.28x17 12x21 8.31-27 21x32 9.37x28 7-12 10.38-32 11-17 11.43-38 16-21 12.49-43 1-7 13.47-42 7-11 14.41-37 19-23 15.28x19 14x23 16.46-41 21-27 17.32x21 17x26 18.37-32 10-14 19.33-28 4-10 20.28x19 13x33 21.38x29 8-13 22.41-37 2-8 23.43-38 11-17 24.39-33 14-19 25.34-30 20-24 26.29x20 15x24 27.32-27 6-11 28.40-34 17-22 29.37-32 22x31 30.36x27 12-17 31.44-39 10-14 32.30-25 18-23 33.34-30 8-12 34.42-37 11-16 35.48-43 14-20 36.25x14 9x20 37.33-28 20-25 38.50-44 25x34 39.39x30 13-18 40.38-33 23-29 41.43-38 18-23 42.44-40 3-9 43.30-25 9-14 44.40-34 29x40 45.35x44 17-21 46.44-40 23-29 47.28-22 1-1

**(10) Meurs,P.P. (Pim) - Dul,E. (Erdenebileg)**

Wch, 27-05-2011

1.34-29 19-23 2.40-34 14-19 3.45-40 10-14 4.32-28 23x32 5.37x28 5-10 6.50-45 17-22 7.28x17 12x21 8.33-28 7-12 9.39-33 1-7 10.42-37 12-17 11.44-39 8-12 12.47-42 3-8 13.49-44 18-23 14.29x18 12x32 15.37x28 7-12 16.41-37 13-18 17.46-41 21-26 18.28-23 19x28 19.33x13 9x18 20.35-30 20-25 21.30-24 4-9 22.31-27 9-13 23.34-30 25x34 24.40x29 14-20 25.45-40 10-14 26.39-34 17-21 27.44-39 21x32 28.37x28 18-22 29.28x17 11x22 30.38-33 12-17 31.41-37 17-21 32.43-38 13-18 33.37-32 21-27 34.32x21 16x27 35.42-37 6-11 36.38-32 27x38 37.33x42 8-12 38.42-38 2-8 39.38-32 8-13 40.48-42 22-27 41.32x21 26x17 42.42-38 17-22 43.37-32 11-16 44.32-27 22x31 45.36x27 20-25 46.38-32 12-17 47.32-28 14-19 48.40-35 19x30 49.35x24 17-21 50.28-22 21x32 51.39-33 18x27 52.33-28 32x23 53.29x9 27-31 54.9-4 31-37 55.4-27 37-42 56.27-32 15-20 57.24x15 42-48 1-1

**(11) Meurs,P.P. (Pim) - Shchegolev,V. (Viachesla**

World Cup Men, 19-07-2011

1.34-29 19-23 2.40-34 14-19 3.45-40 10-14 4.32-28 23x32 5.37x28 18-23 6.29x18 12x32 7.38x27 7-12 8.41-37 12-18 9.46-41 1-7 10.42-38 7-12 11.37-32 19-23 12.41-37 5-10 13.50-45 14-19 14.47-42 10-14 15.34-29 23x34 16.39x30 18-23 17.44-39 12-18 18.30-25 20-24 19.40-34 8-12 20.34-29 23x34 21.39x30 17-22 22.43-39 24-29 23.33x24 22-28 24.32x23 18x20 25.39-33 12-18 26.37-32 18-23 27.49-44 2-8 28.44-40 8-12 29.40-34 12-17 30.34-29 23x34 31.30x39 13-18 32.45-40 20-24 33.40-34 17-21 34.34-30 3-8 35.31-26 18-23 36.26x17 11x31 37.36x27 9-13 38.42-37 4-9 39.37-31 13-18 40.31-26 9-13 41.33-28 8-12 42.48-43 6-11 43.39-34 11-17 44.43-39 16-21 45.27x16 18-22 46.38-33 24-29 47.33x24 22x44 48.34-29 23x34 49.30x50 19x30 50.25x34 14-19 51.50-44 19-23 52.44-39 13-18 53.32-27 23-28 54.34-29 15-20 55.35-30 20-25 56.39-33 25x23 57.33x11 23-29 58.11-6 29-34 59.6-1 34-40 60.27-22 18x27 61.1x45 27-32 62.45-29 2-0

**(12) Kirzner,I. (Igor) - Milshin,V. (Vladimir)**

World Cup Men, 21-07-2011

1.34-29 19-23 2.40-34 14-19 3.45-40 10-14 4.32-28 23x32 5.37x28 5-10 6.38-32 16-21 7.43-38 21-26 8.41-37 17-22 9.28x17 11x22 10.49-43 6-11 11.50-45 1-6 12.29-24 20x29 13.33x24 19x30 14.34x25 22-27 15.31x22 18x27 16.32x21 26x17 17.39-33 12-18 18.35-30 7-12 19.37-32 14-19 20.30-24 19x30 21.25x34 17-22 22.46-41 11-17 23.41-37 6-11 24.43-39 9-14 25.33-28 22x33 26.39x28 18-23 27.28x19 14x23 28.34-29 23x34 29.40x29 13-19 30.38-33 8-13 31.42-38 19-24 32.29x20 15x24 33.47-42 10-14 34.45-40 3-9 35.48-43 2-8 36.43-39 13-18 37.40-34 9-13 38.36-31 11-16 39.31-27 4-9 40.34-29 17-22 41.29x20 22x31 42.37x26 14x25 1-1

**(13) Heusdens,R.W. (Ron) - Ndjofang,J. (Jean-Marc)**

Cannes, 15-02-2012

1.34-29 19-23 2.40-34 14-19 3.45-40 10-14 4.32-28 23x32 5.37x28 5-10 6.38-32 17-22 7.28x17 12x21 8.41-37 7-12 9.32-28 11-17 10.31-26 6-11 11.46-41 1-6 12.42-38 19-23 13.28x19 14x23 14.33-28 23x32 15.37x28 21-27 16.28-22 17x28 17.29-24 20x29 18.34x21 16x27 19.41-37 12-17 20.37-32 8-12 21.32x21 11-16 22.40-34 16x27 23.38-

32 27x38 24.43x32 15-20 25.39-33 20-24 26.44-39 13-19 27.49-43 9-13 28.47-42 18-23 29.34-29 23x34 30.39x30 13-18 31.43-38 10-14 32.36-31 18-23 33.31-27 3-8 34.33-28 8-13 35.27-22 4-9 36.22x11 6x17 37.42-37 12-18 38.37-31 18-22 39.48-42 22x33 40.38x18 13x22 41.32-27 14-20 42.27x18 20-25 43.31-27 25x34 1-1

**(14) Golubeva,Z. (Zoja) - Motrichko,V. (Viktoriya)**

EU-chW, 22-09-2012

1.34-29 19-23 2.40-34 14-19 3.45-40 10-14 4.32-28 23x32 5.37x28 18-23 6.29x18 12x32 7.38x27 7-12 8.41-37 1-7 9.46-41 12-18 10.42-38 7-12 11.37-32 19-23 12.41-37 14-19 13.47-42 17-22 14.50-45 12-17 15.34-29 23x34 16.40x29 17-21 17.31-26 22x31 18.26x17 11x22 19.37x26 5-10 20.42-37 10-14 21.48-42 8-12 22.37-31 2-7 23.32-27 19-24 24.45-40 14-19 25.40-34 3-8 26.34-30 16-21 27.26x28 18-23 28.29x18 12x21 29.31-26 7-12 30.26x17 12x21 31.36-31 21-26 32.31-27 20-25 33.38-32 25x34 34.39x30 13-18 35.43-38 9-13 36.44-39 4-9 37.33-28 18-23 38.49-44 8-12 39.30-25 6-11 40.44-40 9-14 41.40-34 11-16 42.42-37 13-18 43.28-22 23-29 44.22x13 19x8 45.34x23 8-13 46.27-22 2-0

**(15) Scholma,A.D. (Auke) - Clerc,R.J. (Rob)**

NLD-chT Ereklasse, 10-11-2012

1.34-29 19-23 2.40-34 14-19 3.45-40 10-14 4.32-28 23x32 5.37x28 17-22 6.28x17 12x21 7.41-37 7-12 8.37-32 21-26 9.33-28 26x37 10.42x31 16-21 11.39-33 21-26 12.47-42 26x37 13.42x31 5-10 14.44-39 19-23 15.28x19 14x23 16.35-30 10-14 17.40-35 20-25 18.46-41 14-20 19.41-37 11-17 20.48-42 6-11 21.31-27 23-28 22.32x23 20-24 23.30x19 13x24 24.29x20 18x40 25.35x44 25x14 26.38-32 9-13 27.39-34 4-9 28.44-39 12-18 29.49-44 1-7 30.33-28 7-12 31.34-29 14-19 32.43-38 2-7 33.29-23 18x29 34.28-22 17x28 35.32x34 13-18 36.39-33 9-14 37.44-39 15-20 38.50-44 20-24 39.36-31 11-17 40.31-26 3-9 41.33-29 24x33 42.38x29 1-1 (1.54/1.37)

**(16) Golubeva,Z. (Zoja) - Nogovitsyna,M. (Matrena)**

WMSG Women dec rapid, 16-12-2011

1.34-29 19-23 2.40-34 14-19 3.45-40 10-14 4.32-28 23x32 5.37x28 5-10 6.42-37 17-22 7.28x17 11x22 8.37-32 6-11 9.41-37 11-17 10.46-41 7-11 11.48-42 1-6 12.50-45 19-23 13.35-30 20-25 14.31-27 22x31 15.36x27 17-22 16.41-36 22x31 17.36x27 12-17 18.40-35 14-19 19.30-24 19x30 20.35x24 17-22 21.47-41 22x31 22.37x26 10-14 23.24-19 13x24 24.29x20 15x24 25.34-29 23x34 26.39x10 4x15 27.44-39 9-14 28.49-44 14-19 29.45-40 8-13 30.40-34 2-8 31.41-36 15-20 32.42-37 18-23 33.37-31 20-24 34.32-28 23x32 35.38x27 19-23 36.33-29 24x33 37.39x19 13x24 38.43-39 8-12 39.34-29 24x33 40.39x28 25-30 41.44-40 1-1

**(17) Bulatov,A. (Alexander) - Tolchykau,A. (Andrei)**

WRUS-ch Final A, 24-04-2011

1.34-29 19-23 2.40-34 14-19 3.45-40 10-14 4.32-28 23x32 5.37x28 5-10 6.38-32 16-21 7.43-38 21-26 8.49-43 26x37 9.42x31 17-22 10.28x17 12x21 11.47-42 7-12 12.50-45 1-7 13.31-26 20-24 14.26x17 12x21 15.29x20 15x24 16.41-37 8-12 17.46-41 21-26 18.34-29 14-20 19.29-23 19x28 20.32x23 18x29 21.35-30 24x35 22.33x15 12-18 23.37-32 11-17 24.39-33 10-14 25.41-37 7-11 26.32-28 17-21 27.37-31 26x37 28.42x31 21-26 29.38-32 26x37 30.32x41 18-22 31.28x17 11x22 32.41-37 2-7 33.43-38 13-18 34.37-32 9-13 35.48-42 14-19 36.42-37 7-12 37.37-31 19-23 38.33-29 23x34 39.40x29 13-19 40.45-40 19-23 41.40-34 6-11 42.38-33 12-17 43.29-24 11-16 44.32-27 3-9 45.31-26 22x31 46.36x27 9-13 47.34-30 17-22 48.30-25 22x31 49.26x37 18-22 50.37-32 22-27 51.32x21 16x27 1-1

**(18) Heusdens,R.W. (Ron) - Thijssen,K. (Kees)**

Damschool DEZ Culemborg, 03-12-2011

1.34-29 19-23 2.40-34 14-19 3.45-40 10-14 4.32-28 23x32 5.37x28 5-10 6.42-37 17-22 7.28x17 11x22 8.37-32 6-11 9.41-37 11-17 10.31-26 19-23 11.46-41 14-19 12.36-31 10-14 13.48-42 4-10 14.32-28 23x32 15.37x28 18-23 16.29x27 17-21 17.26x17 12x23 18.34-30 20-24 19.30-25 15-20 20.42-37 10-15 21.33-28 23x32 22.37x28 8-12 23.38-32 12-18 24.43-38 7-11 25.31-27 1-6 26.47-42 2-8 27.39-33 24-29 28.33x24

20x29 29.41-37 18-22 30.28x17 11x31 31.37x26 19-23 32.49-43 6-11 33.44-39 11-17  
34.50-45 13-18 35.40-34 29x40 36.45x34 8-12 37.39-33 23-29 38.34x23 18x29  
39.33x24 14-20 40.25x14 9x29 1-1

**(19) Heusdens, R.W. (Ron) - Provoost, B. (Ben)**

Hoogeveen open, 16-08-2011

1.34-29 19-23 2.40-34 14-19 3.45-40 10-14 4.32-28 23x32 5.37x28 5-10 6.38-32 17-  
22 7.28x17 12x21 8.32-28 8-12 9.31-26 2-8 10.26x17 11x22 11.28x17 12x21 12.41-37  
21-26 13.43-38 20-24 14.29x20 15x24 15.36-31 16-21 16.33-28 6-11 17.39-33 11-16  
18.44-39 7-11 19.49-43 1-6 20.37-32 26x37 21.42x31 21-26 22.47-42 26x37 23.42x31  
11-17 24.34-30 18-23 25.31-27 8-12 26.46-41 17-21 27.41-37 12-18 28.39-34 10-15  
29.50-45 6-11 30.30-25 11-17 31.34-30 14-20 32.25x14 9x20 33.30-25 4-9 34.25x14  
9x20 35.43-39 20-25 36.40-34 3-9 37.28-22 17x28 38.33x22 9-14 39.38-33 14-20  
40.33-28 24-30 41.35x24 20x40 42.45x34 15-20 43.39-33 20-24 44.33-29 24x33  
45.28x39 1-1 (0.51/1.14)

**(20) Dolfing, M. (Martin) - Boomstra, R.P. (Roel)**

Salou, 30-05-2009

1.34-29 19-23 2.40-34 14-19 3.45-40 10-14 4.32-28 23x32 5.37x28 17-22 6.28x17  
12x21 7.38-32 5-10 8.43-38 7-12 9.41-37 21-26 10.49-43 1-7 11.50-45 16-21 12.47-  
41 21-27 13.31x22 18x27 14.32x21 26x17 15.37-32 19-23 16.29x18 12x23 17.35-30  
14-19 18.30-25 10-14 19.41-37 7-12 20.46-41 13-18 21.34-29 23x34 22.39x30 9-13  
23.33-29 4-9 24.40-35 2-7 25.44-39 19-23 26.39-33 23x34 27.30x39 20-24 28.36-31  
14-20 29.25x14 9x20 30.45-40 17-22 31.40-34 11-17 32.41-36 6-11 33.31-27 22x31  
34.36x27 3-9 35.37-31 17-22 36.34-30 11-17 37.30x19 13x24 38.39-34 24-29  
39.34x23 18x29 40.33x24 20x29 41.27x18 12x23 1-1 (0.49/1.19)

**(21) NDiaye, M. (Macodou) - Wiering, J.G. (Johan)**

Thailand open, 25-05-2009

1.34-29 19-23 2.40-34 14-19 3.45-40 10-14 4.32-28 23x32 5.37x28 17-22 6.28x17  
12x21 7.33-28 7-12 8.39-33 1-7 9.42-37 21-26 10.44-39 5-10 11.47-42 11-17 12.49-  
44 7-11 13.50-45 17-21 14.29-24 20x29 15.33x24 19x30 16.34x25 12-17 17.39-33 14-  
19 18.44-39 10-14 19.35-30 17-22 20.28x17 11x22 21.31-27 22x31 22.36x27 21x32  
23.37x28 4-10 24.30-24 19x30 25.25x34 14-19 26.41-37 2-7 27.46-41 7-12 28.37-32  
16-21 29.42-37 9-14 30.41-36 21-27 31.32x21 26x17 32.36-31 6-11 33.31-27 11-16  
34.28-22 17x28 35.33x22 12-17 36.22x11 16x7 37.37-32 7-11 38.48-42 15-20 39.42-  
37 20-24 40.32-28 14-20 41.38-32 20-25 42.40-35 8-12 43.34-30 25x34 44.39x30 18-  
23 45.37-31 12-17 46.31-26 3-8 47.45-40 8-12 48.43-39 10-14 49.39-34 11-16  
50.30-25 23-29 51.34x23 13-18 52.40-34 18x40 53.35x44 12-18 54.44-40 18-23  
55.27-22 24-29 56.22x11 16x7 57.40-35 29-34 58.35-30 23-29 59.30x39 29-33 60.39-  
34 33x22 1-1

**(22) Sijbrands, T. (Ton) - Koster, A. (Antoine)**

Wr sim blind Ton Sijbran, 25-09-2009

1.34-29 19-23 2.40-34 14-19 3.45-40 10-14 4.32-28 23x32 5.37x28 18-23 6.29x18  
12x32 7.38x27 7-12 8.41-37 1-7 9.46-41 12-18 10.37-32 7-12 11.41-37 5-10 12.42-  
38 17-21 13.50-45 19-23 14.34-30 20-25 15.47-42 25x34 16.40x29 23x34 17.39x30  
14-19 18.30-25 10-14 19.44-39 15-20 20.39-34 19-23 21.33-28 13-19 22.38-33 20-24  
23.42-38 8-13 24.43-39 2-8 25.49-44 4-10 26.44-40 10-15 27.34-30 21-26 28.39-34  
11-17 29.34-29 23x34 30.40x20 15x24 31.27-22 18x27 32.31x11 6x17 33.45-40 12-18  
34.28-23 19x39 35.30x10 9-14 36.10x19 13x24 37.38-33 39x28 38.32x21 16x27 39.48-  
43 8-13 40.43-38 13-19 41.40-34 3-9 42.34-30 2-0

**(23) Ndjofang, J. (Jean-Marc) - Ba, B. (Bassirou)**

AFR-ch ql, 12-06-2010

1.34-29 19-23 2.32-28 23x32 3.37x28 14-19 4.40-34 10-14 5.45-40 18-23 6.29x18  
12x32 7.38x27 7-12 8.41-37 1-7 9.46-41 17-21 10.42-38 21x32 11.37x28 5-10 12.31-  
27 11-17 13.47-42 19-23 14.28x19 14x23 15.38-32 10-14 16.41-37 14-19 17.33-28  
20-24 18.43-38 7-11 19.39-33 12-18 20.49-43 17-22 21.28x17 11x31 22.37x26 9-14

23.36-31 24-29 24.33x24 19x39 25.44x33 6-11 26.31-27 11-17 27.40-34 17-22 28.50-44 22x31 29.26x37 8-12 30.32-27 12-17 31.38-32 2-8 32.37-31 17-22 33.33-28 22x33 34.43-39 33-38 35.42x33 8-12 36.31-26 3-8 37.33-29 12-17 38.35-30 4-9 39.39-33 17-22 40.48-43 22x31 41.26x37 16-21 42.43-38 14-19 1-1

**(24) Kirzner, I. (Igor) - Stap, van der, P.J. (Peter)**

EU-ch, 28-08-2010

1.34-29 19-23 2.40-34 14-19 3.45-40 10-14 4.32-28 23x32 5.37x28 5-10 6.50-45 17-22 7.28x17 12x21 8.33-28 7-12 9.41-37 1-7 10.37-32 19-23 11.28x19 13x33 12.39x28 9-13 13.38-33 20-24 14.44-39 4-9 15.46-41 21-27 16.32x21 16x27 17.31x22 18x27 18.42-37 11-16 19.43-38 6-11 20.37-31 12-18 21.31x22 18x27 22.41-37 7-12 23.47-42 2-7 24.28-23 14-20 25.23-19 24-29 26.33x24 20x29 27.34x23 13x24 28.39-33 10-14 29.40-34 14-20 30.34-30 9-13 31.30x19 13x24 32.33-29 24x33 33.38x29 20-24 34.29x20 15x24 35.45-40 3-9 36.42-38 16-21 37.38-33 21-26 38.49-43 9-14 39.40-34 8-13 40.43-39 13-18 41.34-30 18x38 42.30x10 38-43 43.10-4 43x34 44.4x31 34-39 45.48-43 39x48 46.31-4 48x31 47.36x27 11-16 48.35-30 2-0

**(25) Heusdens, R.W. (Ron) - Adamaszek, M. (Mariusz)**

EU-ch, 30-08-2010

1.34-29 19-23 2.40-34 14-19 3.45-40 10-14 4.32-28 23x32 5.37x28 5-10 6.38-32 17-22 7.28x17 12x21 8.43-38 7-12 9.41-37 1-7 10.31-26 20-24 11.26x17 12x21 12.29x20 15x24 13.36-31 7-12 14.32-28 11-17 15.37-32 18-22 16.31-26 13-18 17.49-43 21-27 18.32x21 16x27 19.46-41 6-11 20.34-30 10-15 21.39-34 15-20 22.30-25 2-7 23.34-29 18-23 24.29x18 12x32 25.42-37 8-13 26.37x28 27-31 27.26x37 24-29 28.33x15 22x31 29.43-38 17-22 30.44-39 11-17 31.50-44 31-36 32.39-33 19-23 33.44-39 23-28 34.41-37 7-12 35.40-34 17-21 36.34-29 21-27 37.35-30 13-18 38.37-31 9-13 39.39-34 28x39 40.34x43 13-19 41.30-24 19x30 42.25x34 12-17 43.34-30 17-21 44.31-26 36-41 45.26x28 41-46 46.28-22 46-23 47.22x31 23x25 48.38-33 4-10 49.15x4 25-20 50.4x22 20x49 51.22-13 14-20 52.31-26 49-16 53.13-2 20-25 54.2-19 16-49 55.19-35 49-16 56.35-49 16-7 57.26-21 25-30 58.21-16 30-35 59.49-44 3-9 60.48-42 9-14 61.42-38 14-19 62.44-49 7-34 63.38-33 34-40 1-1

**(26) Boomstra, R.P. (Roel) - Thijssen, K. (Kees)**

Prague, 18-06-2010

1.34-29 19-23 2.40-34 14-19 3.45-40 10-14 4.32-28 23x32 5.37x28 18-23 6.29x18 12x32 7.38x27 7-12 8.41-37 17-21 9.46-41 21x32 10.37x28 12-18 11.41-37 16-21 12.43-38 21-26 13.38-32 5-10 14.42-38 1-7 15.34-30 19-23 16.28x19 14x23 17.30-25 10-14 18.35-30 7-12 19.49-43 14-19 20.25x14 19x10 21.30-25 10-14 22.40-34 13-19 23.34-29 23x34 24.39x30 15-20 25.30-24 19x30 26.25x34 14-19 27.32-28 18-23 28.37-32 26x37 29.32x41 23x32 30.38x27 11-17 31.47-42 12-18 32.42-38 8-13 33.41-37 18-22 34.27x18 13x22 35.37-32 9-13 36.44-39 13-18 37.50-44 6-11 38.48-42 11-16 39.33-28 22x33 40.39x28 20-24 1-1